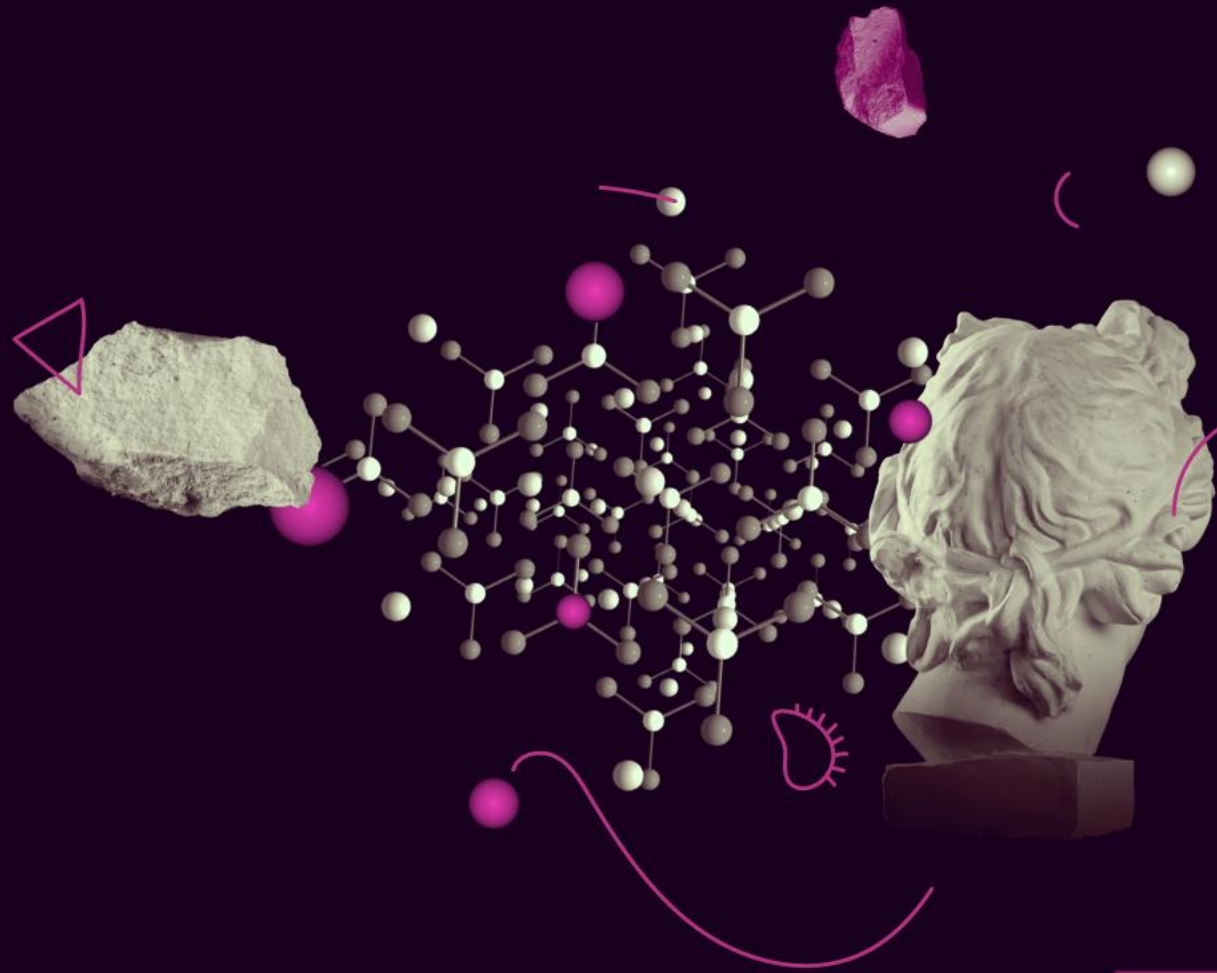




**MSCA**

Marie Skłodowska-Curie Actions

*Developing talents, advancing research*



# Maximise your impact with Staff Exchanges

European Research Executive Agency

Monika HOLIK – Head of Unit REA.A3

Marie Skłodowska-Curie Actions

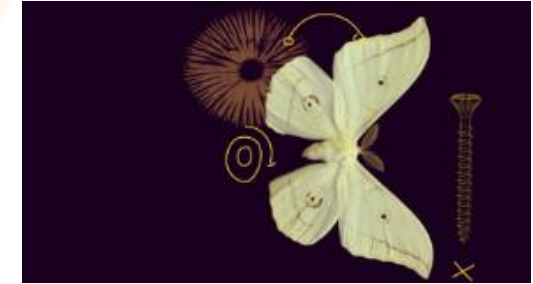
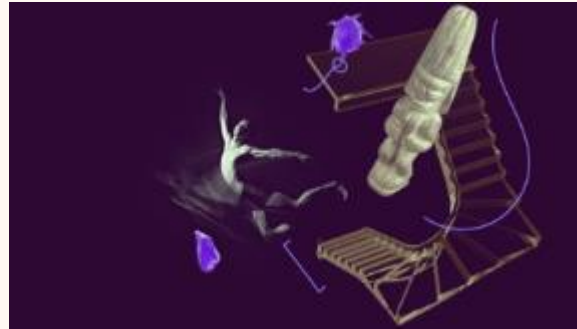


@REA\_research, @MSCAactions

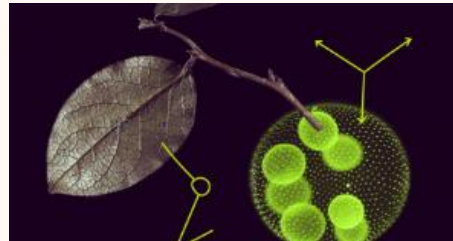
# Marie Skłodowska-Curie Actions (MSCA)



Doctoral Networks



COFUND



Postdoctoral Fellowships

**Staff Exchanges:**  
Equipping researchers and organisations with new knowledge and skills through mobility and training



MSCA and Citizens

# Staff Exchanges: Funding mobility in R & I



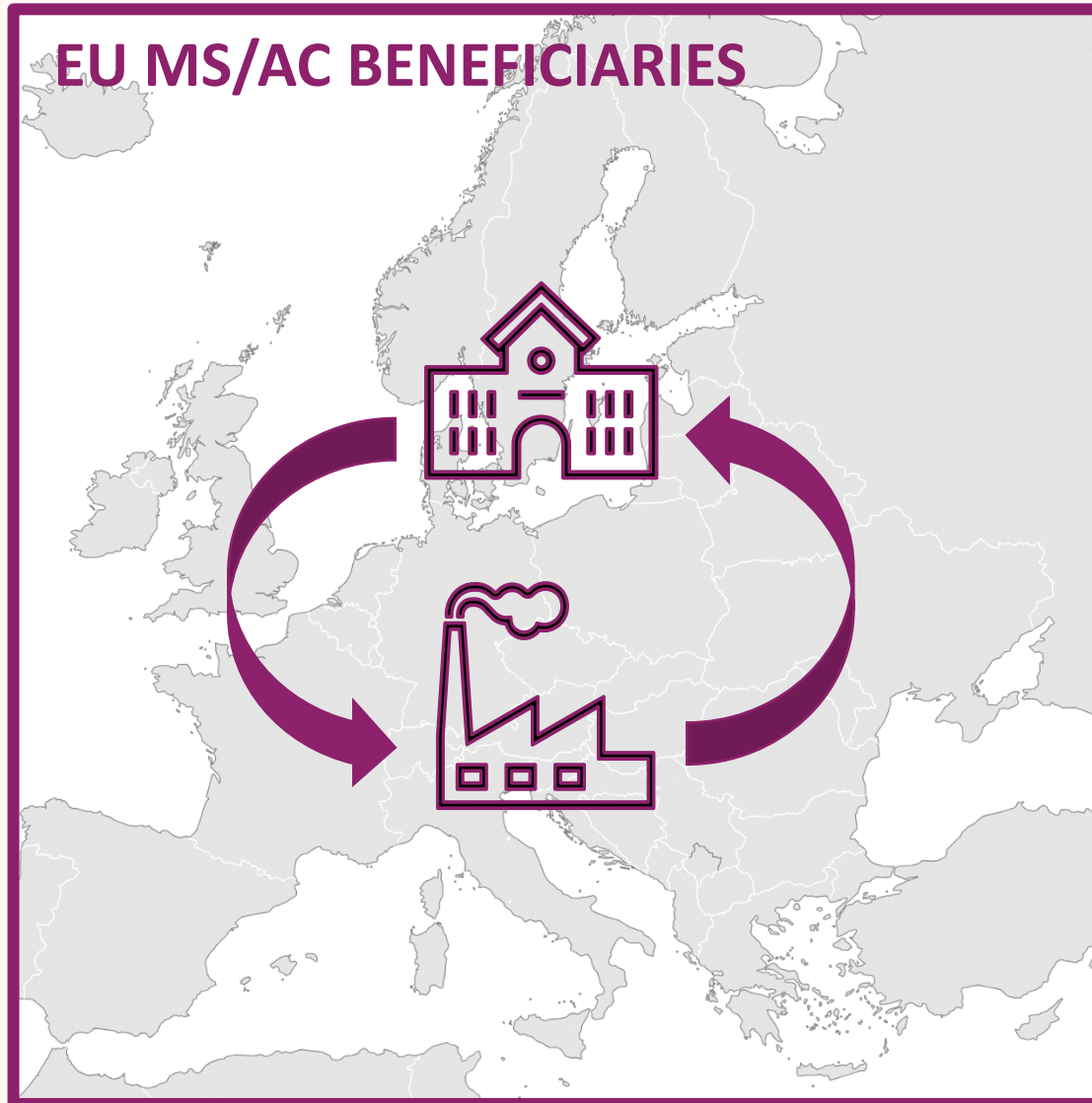
Enhancing collaboration between universities and the private sector

Fostering knowledge transfer between participating organisations

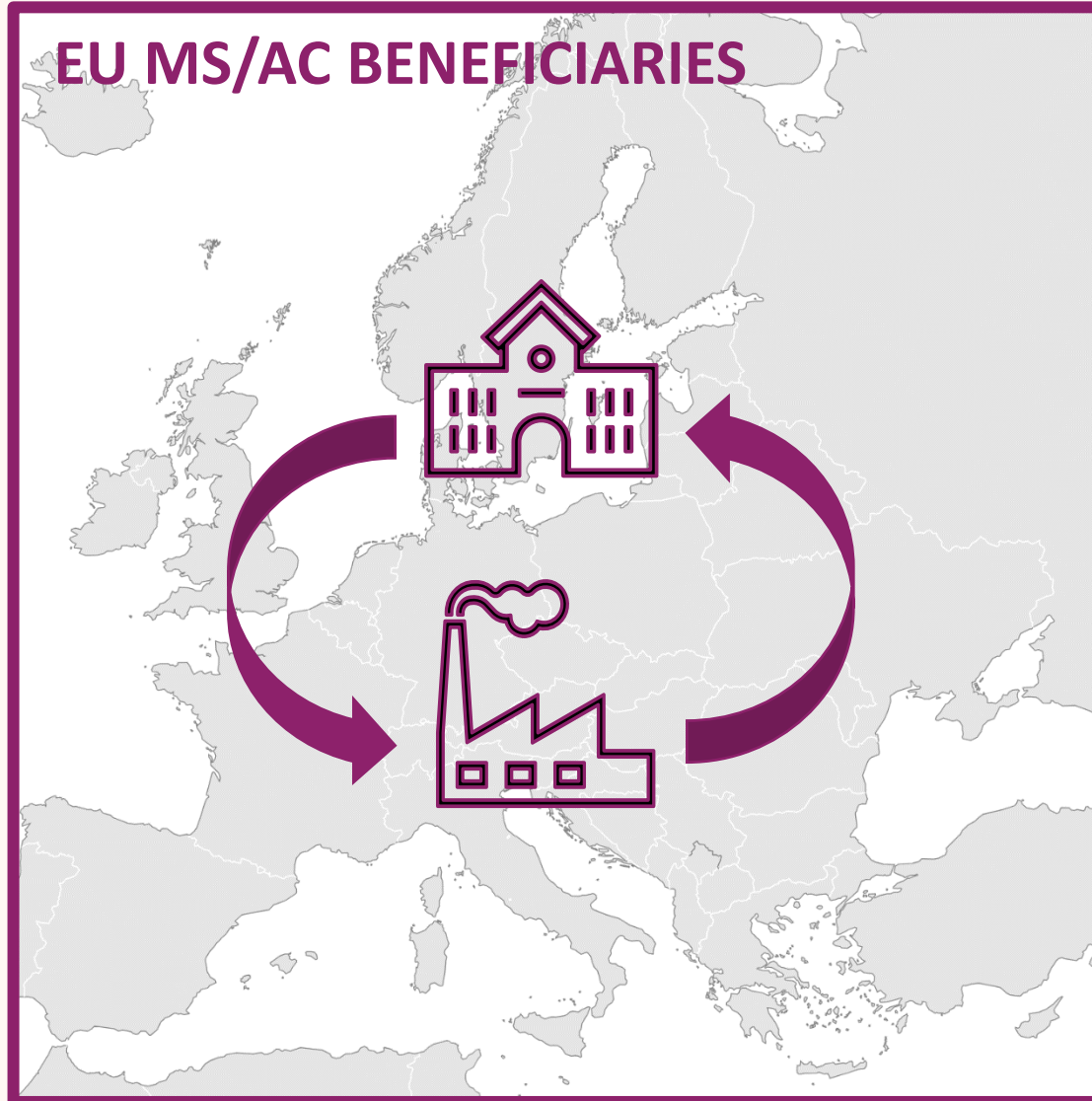
Connecting Research and Innovation entities of different scientific disciplines

Encouraging cooperation across the globe

# Eligible secondments



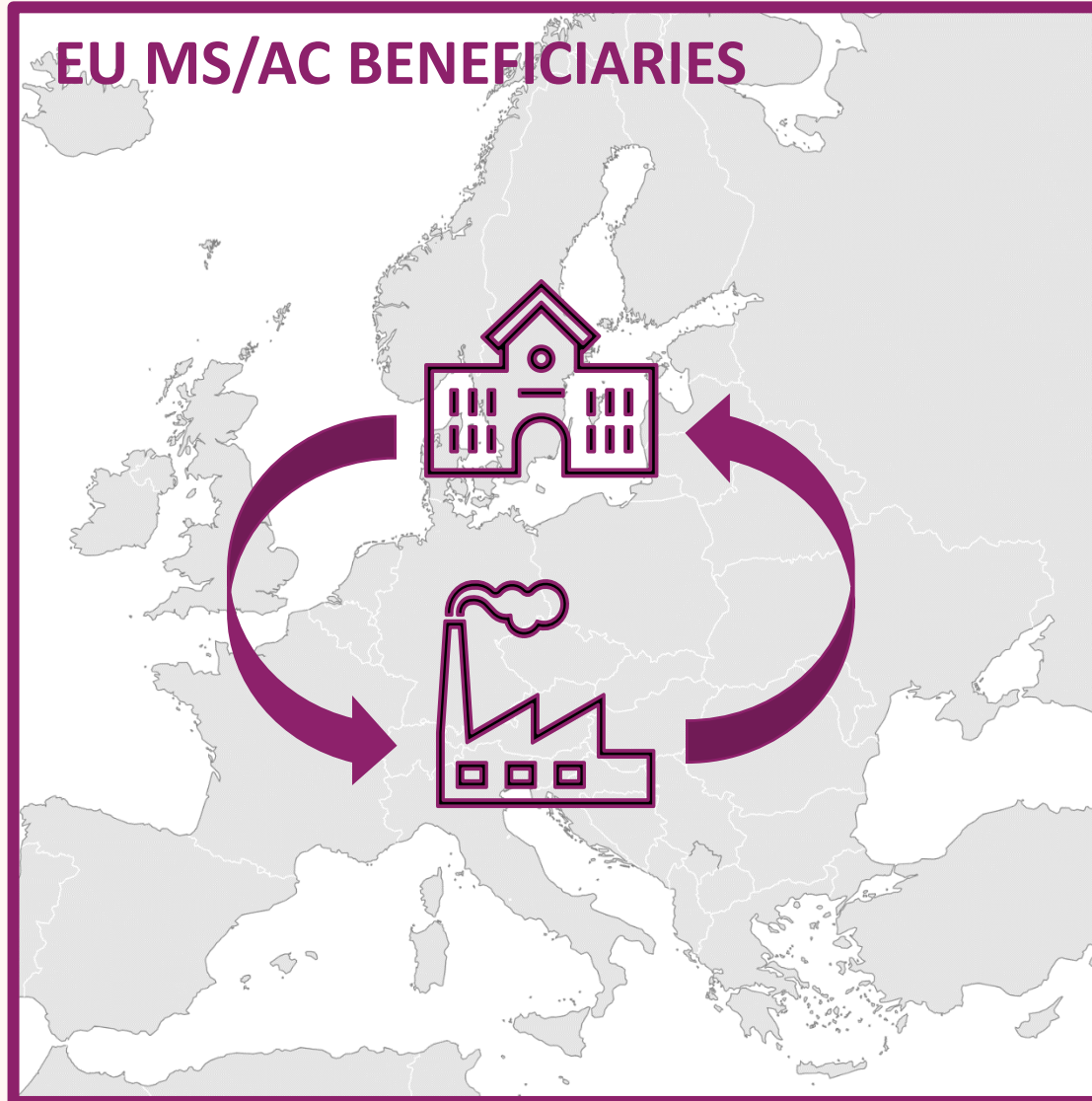
# Eligible secondments



## TC PARTNERS



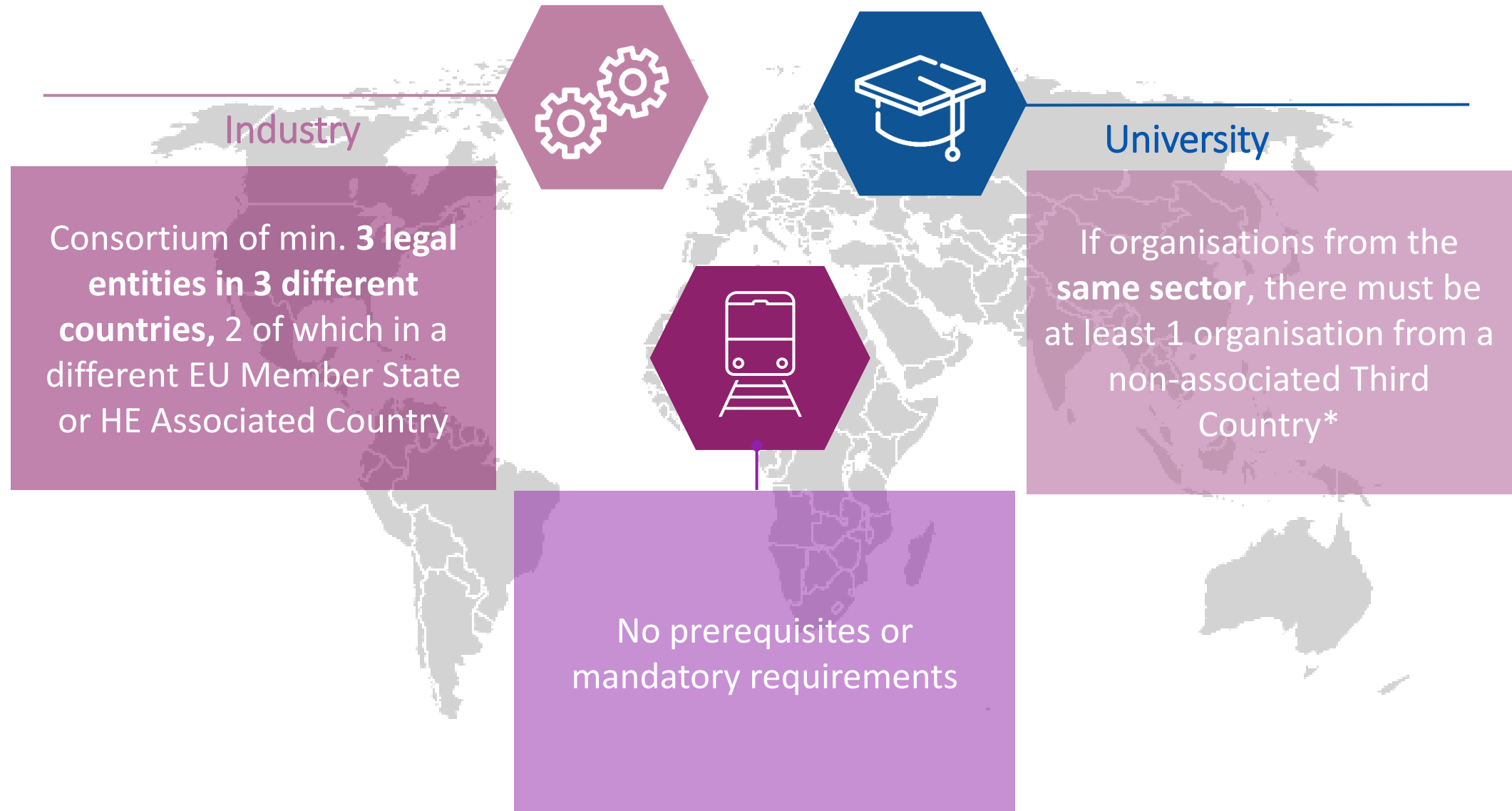
# Eligible secondments



## TC PARTNERS



# Eligible consortia



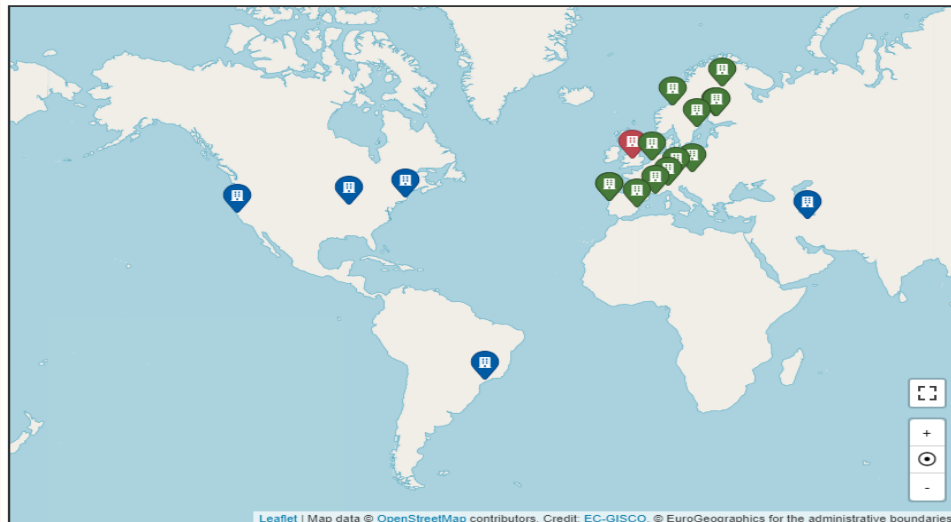
# RISEN# 691135 H2020-MSCA-RISE-2015

## RISEN project: Rail Infrastructure Systems Engineering Network

RISEN aims to produce the next generation of engineers and scientists needed to meet the challenge of providing sustainable, smart and resilient railway infrastructure systems critical for maintaining European competitiveness.



- UK Coordinator
- 22 partners
- 13 from based in EU/AC
- 9 entities based in TC



€ 1 273 500,00





# Secondments – RISEN project example



# Project Administration

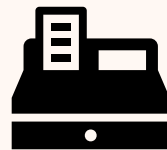
**1 Year Report (month 13)**



**1 Mid-Term-Meeting (month 18)**

**1 Interim Payment + Tech Report (month 24)**

**1 Final Payment + Tech Report (month 48)**



**Unit Cost based Scheme**

# Eligible staff



## Seconded staff members



Any type of staff involved in R&I activities (researchers, administrative staff, managerial staff, technical staff)

Researchers at any career stage (e.g. from doctoral candidates to postdoctoral researchers)

Actively engaged in research and/or innovation activities for at least **1 month** prior at the sending institution

Each staff member is seconded for a period of **1 to 12 months** (may be split into several stays)

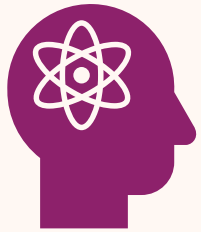
Staff needs to be devoted **full-time** to the action during the secondment

After the secondment, staff should **return to their sending institution**

# A programme straightforward to manage

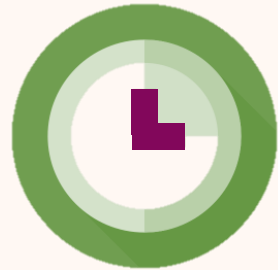


# Staff Exchanges – Key features



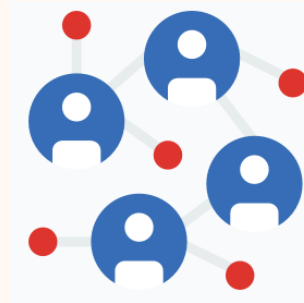
## **BOTTOM-UP**

Funding  
mobility in all  
scientific  
disciplines



## **DURATION**

4 years  
360 PM per  
project



## **SECONDMENTS**

1-12 months per  
staff  
*Interdisciplinary*  
secondments:  
same sector,  
within Europe for  
max 1/3 PM



## **UNIT COST**

2300€ - Staff  
allowance  
2300€ - organisation



## **BUDGET**

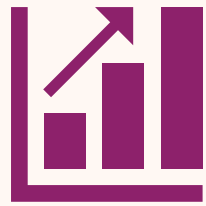
1 Call/year –  
Next Call  
€ 78,5 M

# Staff Exchanges - Making a Difference



## **WORLD-WIDE**

The highest participation of non-EU countries in MSCA



## **BUSINESS PARTICIPATION**

Businesses receive an estimated 20% of the available funding



## **PATENTS**

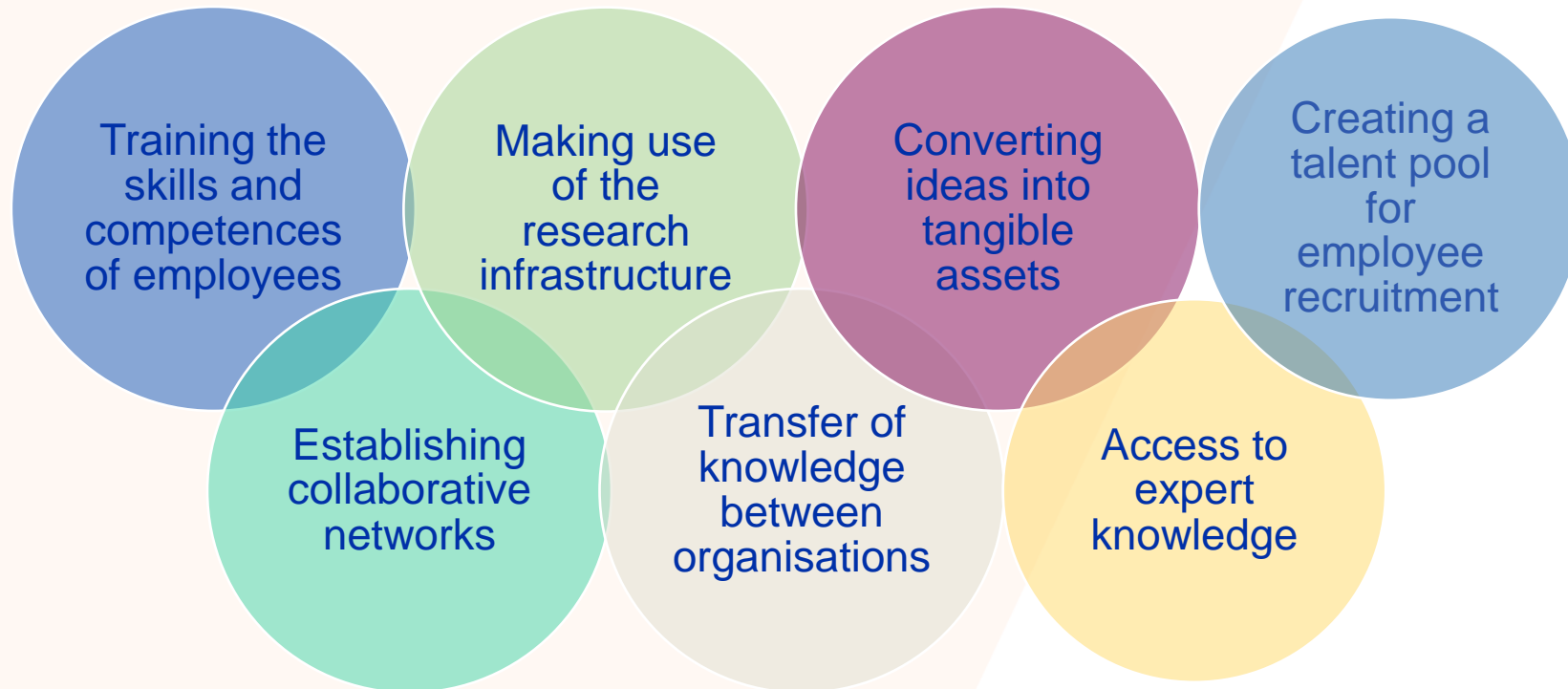
37% of all patents in MSCA actions are generated in SE projects



## **SUCCESS RATE**

The success rate is up to 40% depending on the discipline

# How can you benefit from Staff Exchanges?



# A complementary tool to boost Europe's Rail projects' impact



**Regional coverage of EU-Rail consortium extended**



**Skills enhanced**



**Access to more disciplines**



# Key Dates & Budget Call 2023



**Call Opening 2023: 5 October 2023**



**Call Closure : 28 February 2024**



**Call 2023 Budget: € 78,5 M**



**Info session : 8 December 2023**

# Q&A



The banner features a dark background with a central illustration of a woman's head in profile, surrounded by various scientific symbols: a rock, a molecular structure, a globe, and geometric shapes. A large, stylized 'M' logo is visible in the upper left corner of the banner area.

**MSCA**  
Marie Skłodowska-Curie Actions  
*Developing talents, advancing research*

© European Union, 2021. (CC BY-NC-ND 4.0) – source: iStockphoto.com



# Thank you!

---

**European Research Executive Agency**

**#MSCA #HorizonEU**

 **@REA\_research @MSCAactions**

**[https://rea.ec.europa.eu/funding-and-grants/horizon-europe-marie-sklodowska-curie-actions\\_en](https://rea.ec.europa.eu/funding-and-grants/horizon-europe-marie-sklodowska-curie-actions_en)**



© European Union 2021

Unless otherwise noted the reuse of this presentation is authorised under the [CC BY 4.0](https://creativecommons.org/licenses/by/4.0/) license. For any use or reproduction of elements that are not owned by the EU, permission may need to be sought directly from the respective right holders. Image sources: [iStockphoto.com/Unsplash](https://www.istockphoto.com/)

